



JOY FORGIVENESS FAITH RESPECT SERVICE PEACE STEWARDSHIP

Introducing Accelerated Reader



I am pleased to inform you that your child now has access to Accelerated Reader (AR), which we have adopted as our home reading scheme in replacement of MyBookBlog, who ceased to trade in the summer.

What is Accelerated Reader? (AR)

Accelerated Reader is a comprehension-based reading program that helps teachers support and monitor children's reading practice and understanding of what they have read, with the goal of increasing their reading comprehension and improving their literacy skills.

After completing an initial STAR Reading Assessment to determine their ZPD (Zone of Proximal Development), which provides the children with a range from which they can choose from – similar to MyBookBlog's challenge levels – the children will choose a physical book from our school shelves. AR's reading list has over a whopping 200,000 titles available so there is certainly something for everyone!

Once the children have completed the book, they head to the AR website to undertake a short quiz, either at home or at school, to measure how much of the book they have understood. AR gives both children and teachers feedback based on the quiz results, which the teacher will then use to help your child.

What is a STAR Reading test?

Every child taking part in AR will complete a STAR Reading test at the beginning of the year and after that, at the end of each half-term. It is an online, multiple-choice reading assessment completed individually on an iPad or computer. Questions continually adjust to your child's responses, so if their response is correct, the difficulty level is increased. If they miss a question or give an incorrect answer, the difficulty level is reduced. This helps to find their 'Goldilocks' reading range – not too easy, but not too tricky! This range is known as their ZPD.


What is a ZPD?

Upon completing the Star Reading test, each student is assigned a Zone of Proximal Development (ZPD) – a reading range. This set of numbers shows the lowest reading level and the highest reading level appropriate for each student. Students should choose books on or in between these numbers to help make sure they are reading books that are not too easy or too difficult – the perfect conditions to promote progress. Please do not panic if their ZPD appears lower than expected, it is important to remember that this is comprehension-based scheme rather than based purely on reading fluency. It is a proven and well-established programme that is highly successful in many schools. We will constantly be reviewing children's reading progress and will retest if we feel the reading level does not match their reading ability and comprehension skills.

How do pupils select books?

Once your child has their ZPD, they can choose a book from our school shelves within their range. Copies of the poster to the right are displayed by the bookshelves to help them accurately choose a book. All books displayed on our corridor bookshelves are on the Accelerated Reader system. They are also welcome to choose a book from home or the library for example (please see the bottom of the page for how to ensure the book is AR suitable).

Inside the book, there will be a stamp as below...

From the library of St. Elizabeth's	
AR Level: _____	
AR Points: _____	
AR Quiz Number: _____	



Accelerated Reader Levels

	0.0 – 1.9
	2.0 – 2.9
	3.0 – 3.9
	4.0 – 4.9
	5.0 – 5.9
	6.0 – 6.9
	7.0 – 7.9
	8.0 – 8.9
	9.0 – 9.9
	10+



Most popular
in Years 1-3



Most popular
in Years 4-6



For Years 5 &
6 only

AR Level: This represents their ZPD number, as shown on the poster to the right, and represents the difficulty of the text. There is a coloured stick on the spine of all books to represent their generic level band, but their precise level is displayed on the stamp inside the book.

AR Points: Books are assigned points based on their word count. Points are earned by passing quizzes and shown on their AR dashboard. Students are set personalised targets by their teacher.

AR Quiz Number: This is the number they must enter into the AR system when they are ready to take their quiz. This ensures they have the matching quiz to the correct title.

The stickers on the levelling poster represents the Interest Level. Books with a smiley face sticker are likely to be most popular for children aged 5-8. Books with a gold star sticker on are likely to be most popular by children aged 9-12, and due to their more mature content and vocabulary, books with a holographic silver sticker on are only to be read by children in years 5 and 6 (similar to the red-stickered books on MyBookBlog). All books on our shelves are deemed appropriate for primary aged children.

What are the AR Quizzes?

Your child can complete an AR quiz either in guided reading time, or at home.

Reading Practice Quizzes: These are the most common type of assessment. The purpose is to measure your child's literal comprehension of the book and provide immediate feedback. Each quiz consists of 3, 5, 10 or 20 multiple-choice questions depending on the book level and length.

Vocabulary Practice Quizzes: These measure a child's command of vocabulary words encountered while reading and are designed to reinforce vocabulary acquisition. Quizzes include 5, 10 or 15 words from a particular book as well as review words from previously read books.

What are points?

Children earn points, or a portion of the book's points, depending on how well they do on the Reading Practice quiz. For example, a child who takes a 5-question quiz on a book worth 1 point will earn 1 point for 5 correct answers (100%), 0.8 point for 4 correct answers (80%) etc. A child who reads a book worth 5 points and takes a 10-question quiz will earn the full 5 points for 10 correct answers (100%), 4.5 points for 9 correct answers (90%) etc. For quizzes with 3, 5 or 10 questions, a child needs to pass a quiz with a score of 60% or higher to earn points. For quizzes with 20 questions, a child needs to pass with a score of 70% or higher to earn points.

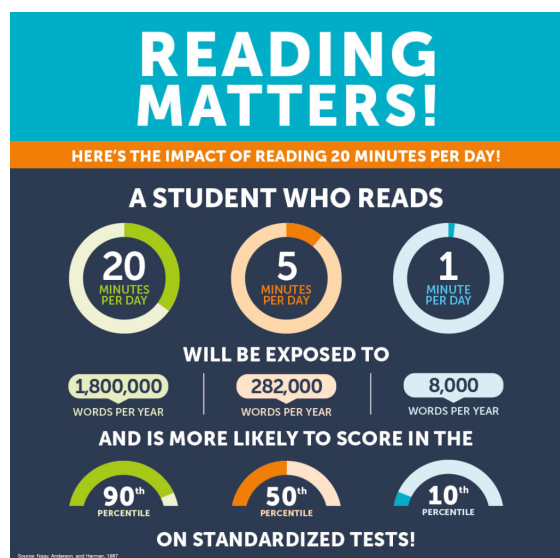
If your child does not do well on a quiz, they will be encouraged to either re-read the book if it is short in length or choose a book that is more appropriate. Depending on the book level, the quiz will take around 5-10 minutes to complete. The results are calculated and shown to the child instantly.

How does my child find out whether a book they want to read from home/the library is on Accelerated Reader?

Head to your child's class webpage and click the 'Accelerated Reader Book Finder' button on the right. From there you can enter the title of the book and discover whether the book is available on the AR system. Please note that on this website, the ZPD Reading Level is called the ATOS Book Level.



ACCELERATED
READER BOOK
FINDER



What are the new reading expectations?

Our reading expectations remain the same. We strongly encourage a minimum of 10 minutes home-reading every day; the more often, the better! This could be independently, to a grown-up or to a sibling.

The children should continue to utilise their reading bookmarks at home, on which they are to write down any words that they are unfamiliar with or have struggled to pronounce. This will be reviewed with their class teacher/TA in their 1:1 reading time. Your child will also now have their own 'Reading Journal', in which they can make notes and drawings about what they have read to help assist them when taking their end of book quiz. This is for both home and school use so please ensure that it is returned to their school bag once used.

Can I track my child's reading progress?

Yes! A further letter will be making its way to you shortly which provides you with a link, username and password to allow you to log onto AR Home Connect, which allows you to see what your child has read, how they have scored and how many points they have obtained. You can also sign up to receive email updates to track your child's work.

Thank you for taking the time to get up to date with our new reading system; we are confident it will be a valuable tool in your child's reading development, and most importantly we are confident that the children will love it! If you have any queries about AR or your child's reading, please don't hesitate to make an appointment with myself, or your child's class teacher.

Kind Regards,
Miss Holmes
(KS2 Reading Lead)



DIOCESE OF
NOTTINGHAM

St Elizabeth's Catholic Voluntary Academy
Matlock Rd, Belper, Derbyshire, DE562JD
info@st-elizabeths.derbyshire.sch.uk
Company Number 7937154



St Ralph
Sherwin
Catholic Multi Academy Trust