



Year 2 – The Plague (Black Death)

Our Golden Threads:



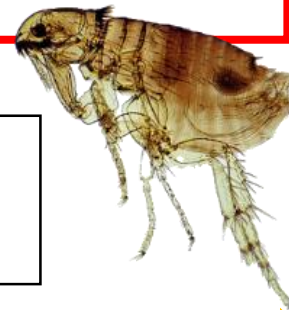
Plague Doctor



Samuel Pepys

Key Knowledge, Concepts and Skills

- The **Plague** is an ancient disease that can be carried by rats and spread by fleas.
- The Plague began in **542** in **Constantinople**.
- In the **1300s**, the Plague spread to Europe, killing more than **25 million** people.
- It spread across Europe because people would travel to **trade** goods but also spread infection and disease. The ships were rat **infested** and rats were able to cross the sea and spread disease.
- The Plague became known as the **Black Death** because of the black patches that appeared on victims' skin.
- The last major outbreak of the Plague in England was in **London** in **1665**.
- The Black Death affected everyone, rich and poor. Whole families died.
- A cross was painted on the door of a **victim** to warn others.
- The dead were buried in large pits on the outskirts of towns.
- Samuel Pepys wrote an **eye-witness** account of the Plague in **1665** in his famous **diary**.



Key Vocabulary and Definitions

artefacts	Objects that help us find out about the past
congested	Crowded or blocked
diary	A personal record of life's events or experiences
eye-witness	Someone who saw events happen
extract	A short passage taken from a larger piece of writing
infested	Full of large numbers of animals or insects.
self-isolate	Voluntarily staying away from other people
trade	Selling or swapping goods to other people who want them
victim	A person who is harmed, injured or killed as a result of a crime, accident, disease or other event

Significant Places

Constantinople	An ancient city now called Istanbul , a popular trading port from where the plague spread across Europe.
Eyam	A village in Derbyshire that self-isolated when the plague appeared.
London	The capital city of England.

